

Swindon Town Football Club



Official Programme 5np 1/-



Swindon Town v Bristol City

First-hand

Lively

Reports

Complete

Comprehensive

Coverage

Close-up Action

Shots

Every Game

At home or away

The Evening Advertiser
has it covered

McILROYS

**FULLY LICENSED
RESTAURANT**

**FOR THE BEST-VALUE LUNCH IN TOWN
OPEN ALL DAY SATURDAY**

MORNING COFFEE
LUNCHEON
AFTERNOON TEA
SILVER-GRILL SERVICE

Private room for meetings, private luncheons and dinners, celebrations

McILROYS · REGENT STREET · SWINDON 5294

Swindon Town Football Company Limited

Registered Office County Ground, Swindon

President W J Castle

Vice-Presidents J Davies H Williams

Directors

Chairman H E Lane

Vice-Chairman R Fricker

F L Collings A W Done M Earle C J Green

F Plyer K H Wilmer Dr J Nicholas and T Beales

General Manager R A Morse

Secretary R J Jefferies

Team Manager F Ford

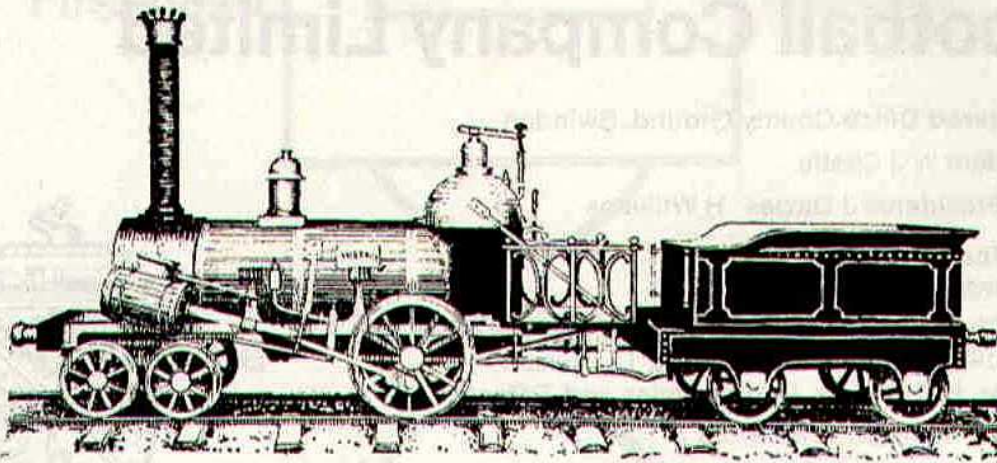


Saturday, 7th November, 1970 – Division II

Swindon Town v Bristol City

Kick-off 3 p.m.

Swindon Town	OFFICIALS	Bristol City
1 Jones	REFEREE	1 Gibson
2 Thomas	Mr R B Kirkpatrick	2 Drysdale
3 Trollope	Leicester	3 Merrick
4 Butler		4 Wimshurst
5 Burrows		5 Rodgers
6 Harland		6 Parr
7 Smith		7 Skirton
8 Smart		8 Sharpe
9 Horsfield	LINESMEN	9 Broomfield
10 Noble	Red Flag:	10 Galley
11 Rogers	Mr F B Handy	11 Tainton
12	Walsall	12
Colours:	Yellow Flag:	Colours:
Red and White	Mr V A Lewis	White
	Bridgend	



MADE IN 1843!

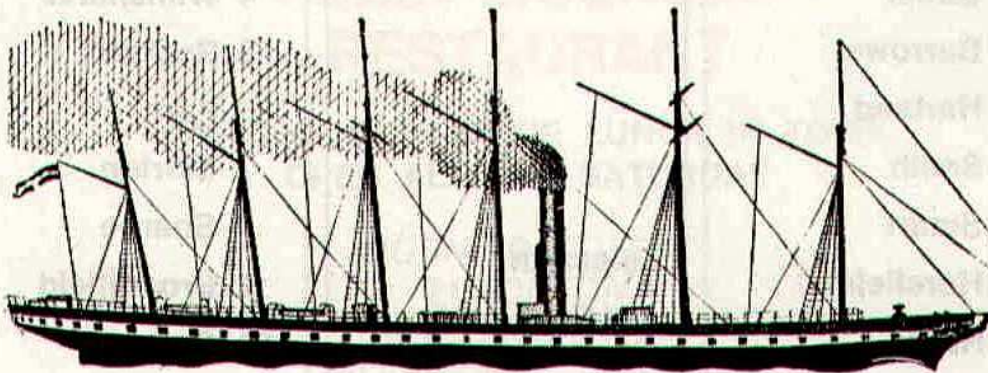
the year that ARKELL'S BREWERY and Swindon's
G.W.R. Works were founded.

ARKELLS

THE LOCAL BREW!

Time honoured by 127 years.

*GOOD HONEST BEER
IN
DELIGHTFUL LICENSED HOUSES*



"S.S. GREAT BRITAIN"

built at Bristol in 1843. Designed by the younger Brunel, she was
the first large vessel to be built of iron and the first screw
steamship to cross the Atlantic. Her speed was about 12 knots.

news & views

Rarely do we comment on previous games, but we are sure the events of last week were most disappointing, in fact almost disheartening.

Swindon had a large following at Fulham, and they could be justifiably proud of their team. Every player gave just everything he had, and one wonders how it was possible to lose such a game. One rather fortunate goal, a deflection, then chances galore which just failed to produce goals. I know goal opportunities must be taken, but this was one of those nights when the ball would not go into the net for Swindon. It was a fast, exciting game throughout the ninety minutes, no unpleasant incidents, gamesmanship or time-wasting. Splendid entertainment for the spectators but, unfortunately for Swindon, an exit from the League Cup.

Then to Saturday and the visit to Birmingham (a team desperate for points). Whilst we did not play very well in the first half, our display in the second period certainly warranted a draw. Birmingham scored soon after half-time, possibly with the help of the wind, and the fact that Frank Burrows sustained a strained muscle in the first-half and was unable to jump as high as usual to head the ball. After that, Swindon fought back and produced several fine attacking movements, which resulted in quite a good goal by Peter Noble. From then on the play flowed from end to end with Birmingham urged on by their crowd, endeavouring to put on the pressure which finally produced a last-minute winning goal, again somewhat fortunate, and in the opinion of many the result of a harsh decision on the edge of the penalty area. A great disappointment to the Swindon party. Such is football. We know supporters are disappointed, but remember, the most upset of all are the players. They certainly trudged their weary bodies from the field on Saturday, with almost despondency.

However, we live to fight another day, and as on many previous occasions we shall come back.

This afternoon we entertain our friends and neighbours Bristol City, who also

are experiencing a poor period.

Our memory goes back to a game played ten years ago – on Tuesday, 6th September, 1960 at Bristol. Result: Bristol City 1, Swindon 1. It was probably the finest display of football by any Swindon team. The ball travelled from man to man with delightful ground passes. We are sure a great number of our supporters remember that match. We quote from the Club programme of the following week, which makes most interesting reading: "Swindon had a large following at Bristol, and we are sure all our supporters considered the journey well worth while. Only one disappointment – the goal against in almost the last second of the game.

Our team played superb football, perhaps too much (if that is possible). It was a real pleasure to watch, and fully appreciated and enjoyed by everyone present. All that is required now, is the ability to score more goals per game. Surely if the team continues to play this style of football goals are bound to come. Perhaps a little more "punch" is needed to finish off the moves.

Nevertheless may we enjoy for a long time this brand of football. The Swindon team was: Burton; Woollen, Trollope; Morgan, Owen (captain), Woodruff; Summerbee, Hunt, Layne, Jackson, Darcy.

In spite of this fine display, we finished the season in 16th place, with 43 points from 46 games. The very wet winter, and the consequent heavy grounds, affected our very young team. Support was magnificent, but evidently in those palmy days a **striker** was needed.

Mr. F. Ford had taken over as manager of Bristol City in March of that year, and it is interesting to note that at least five of the Swindon team are still playing in top class football and three in minor leagues.

Our opponents today, by virtue of their victory over Leicester City, play Fulham in the quarter-final of the League Cup. We wish them the best of luck in this game, which we in Swindon will obviously follow with great interest.

THE GREAT WESTERN HOTEL

(OPPOSITE SWINDON RAILWAY STATION)

The business man's hotel with a top class
steak bar too!

Specialists in
LUNCHEONS and DINNERS
WEDDING PARTIES and RECEPTIONS
good food — quick service

J. ARKELL and SONS LIMITED Telephone SWINDON 22047

Mills and Merricks Limited

16-17 Bridge Street Swindon

Telephone 5365/6

"HOME OR AWAY"

**our function is to ensure that your home is
tastefully and economically furnished**

SWINDON'S COMPLETE HOUSE FURNISHERS

New City Office Supplies Limited

Office and Stationery Suppliers
to Industry and Commerce

6 Commercial Road Swindon

Telephone Swindon (STD Code 0793) 4605



CLARK BROS. (Swindon) LTD

Building and Civil Engineering Contractors

CONSULT US FOR
BUILDING AND CIVIL ENGINEERING
CONSTRUCTION IN ALL ITS PHASES

STRATTON ROAD

SWINDON

Telephone Swindon 27261

Playing Staff of Bristol City F.C.



Back row (left to right): Trevor Jacobs, Jantzen Derrick, Alan Skirton, Gordon Parr, Mike Gibson, Jack Connor, John Galley, Chris Garland, Ken Wimbushurst. Front row (left to right): Danny Bartley, Trevor Tainton, Gerry Sharpe, Dickie Rooks (captain), Brian Drysdale, Geoff Merrick, Gerry Gow.

CECIL GREEN

Artistic Decorations in all its branches

**12 Armstrong Street
Swindon Wilts**

Telephone 4593

C. Goodenough and Sons

Removal and Storage Contractors
any distance

25 Cricklade Street Swindon

Telephone 4555 and 3855

G. A. Streetly

Tobacconist and Confectioner

**10 BOURNE ROAD
MOREDON SWINDON**

Telephone 4956

W. J. SELWOOD

Telephone Swindon 5884

Saddlery

General Leather Goods Manufactured and
Repaired to Your Individual Requirements

**103 BROAD STREET
SWINDON WILTSHIRE**

Notton's Cafe

COUNTY ROAD

Cliff and Grace Hayward
200 yards from Ground

**Snack and Grill Service
all day**

For High Class
Central Heating, Plumbing
Painting and Decorating
Electrical Installations
and Repairs

**NORTH WILTS
Sanitary and Heating
Co. Ltd.**

NEWPORT STREET SWINDON
Telephone 5373/4



THE ALCOHOL FUEL

COATE GARAGE

REPAIRS - OVERHAULS - WELDING
SERVICING - REBORING - TYRES

Props. E. V. & W. H. Mattick
Marlborough Road Swindon

Leese, Ing & Co. Ltd.

Mineral Water and
Squash Manufacturers

LANSDOWN ROAD SWINDON

Telephone 22744

Maylott Studios

For Group and Sports Photographs

Official Photographer to
Swindon Town Football Club

31 Faringdon Road

Telephone 22792

Always at your service

L. Bibby

For all Types — Rags, Iron and Metal, etc.
Spot Cash Paid. Please Telephone 2101
and our van will call.

**THE PADDOCK ERMIN STREET
STRATTON ST. MARGARET**

our visitors

Bristol City

Mike Gibson (Goalkeeper)

Born Derby, was signed in April 1963 from Shrewsbury Town. Previously with Gresley Rovers and Nuneaton Borough. Has appeared in 289 League and 29 Cup games, including an unbroken run of 191 games before an injury in season 1967/68.

Brian Drysdale (Full-back)

Born Wingate, Co. Durham. First signed as an inside-forward with Lincoln City at the age of 17. Almost gave up the game but joined Hartlepool United and became automatic choice as left-back. Signed in close season 1969/70 from Hartlepool. Ever present in first season, 42 League and 6 Cup matches.

John Galley (Centre-forward)

Joined City from Rotherham United to replace Hugh McIlmoyle (transferred to Carlisle). Scored 21 goals in 39 matches 1968/69, and teamed up well with Chris Garland. Injured December 1969 but now fully recovered.

Gordon Parr (Right-half or left-half)

Bristol born. Signed part-time professional February 1957, while on engineering apprenticeship. Signed full-time after National Service. A strong tackler, reverted to full-back for eight matches in 1967/68 when three full-backs were injured. Has now appeared in 276 League and Cup games. Longest serving player.

Keith Fear (Inside-forward)

Born Bristol. Bristol Schoolboy player and Gloucestershire Youth F.A. captain, reaching semi-final of the Counties Championship. Played for England Senior Schools XI v Wales, 1969. Product of the City youth sides and captain of the side to reach F.A. Youth Cup semi-final last season.

David Rodgers (Centre-half)

Bristol born son of Arnold Rodgers, ex-City centre-forward. Educated Cotham Grammar. Bristol Schoolboy and Gloucestershire Youth player. 18 years old, now in second season.

Ken Wimshurst (Right-half)

Secured in October 1967 from Southampton, for whom he had played a leading part in their promotion side. Previously with Wolves.

Ian Broomfield (Centre-forward)

Bristol born. Just completed his second season as a professional. Debut versus Sheffield United March 1969.

Gerry Sharpe (Inside-left)

Born Gloucester. Signed March 1964, he has scored 44 goals in 135 appearances. Produce of the Club's youth policy.

Trevor Jacobs (Full-back)

Born Bristol. Reverted to amateur after 1½ years as apprentice professional. Resigned as professional in July 1965. League debut November 1966 v Rotherham United. Injury robbed him of regular place in 1967/68. Appeared in 91 matches.

Chris Garland (Inside-right)

Born Bristol. An ex-Bristol Boys player. Debut December 1966 and has since appeared in 100 League and 15 Cup games. Selected for the England Under-23 team v Rumania at Plymouth, 1970.

Alan Skirton (Right-winger)

Born Bath. Played for Bath City before joining Arsenal. After long Division 1 experience transferred to Blackpool F.C. from whom he was secured in November 1968.

Thomas Ritchie (Inside-forward)

Born Edinburgh. This 18-year-old signed with younger brother Stephen (apprentice) during summer 1969. Previous club Brigend Thistle.

Gerard Gow (Wing-half)

18-year-old from Glasgow. St. Ninians Boys Club. Played for Glasgow R.C. Schools. Developed inside-forward player last season.

CARTER BROS. OF SWINDON

Car Radio
Specialists

AND NORTH WILTS RENTALS

Hi-Fi Sales
and Service

FOR THE FINEST IN TELEVISION
To purchase or for rental

Personal and courteous attention : The finest after sales service in Town
One of the few really Private Firms **Staunch supporters of the Town**

18 Lagos Street Swindon Telephone 6640 or 23270

THE PORK SHOP

(Swindon Bacon Curing Co. Ltd.)

Specialists in

Bacon - Pork - Cooked Ham

50 FLEET STREET SWINDON

Telephone 22122

J. WILMER

Coal Merchants

St. Margaret's Road Swindon

Telephone 22535

SOUTHERN LAUNDRY CO. LTD.

Launderers and Dry Cleaners

HAYDON STREET SWINDON

Telephone 4161

At Your Service

A. E. LUDLOW LIMITED

Wholesale Fruit and Potato Merchant

COLBOURNE STREET
SWINDON WILTSHIRE
Telephone Swindon 3583

We deliver Fresh Fruit, Vegetables
and Potatoes daily—**Wholesale Only**

BRETTS

PET and GARDEN SUPPLIES

32-33 Commercial Road
and
6 Cromwell Street Swindon

For Paints of Good Quality

H. S. Hodges & Sons

(SWINDON) LTD.

Cricklade Road Swindon
Telephone 22422

Dulux, Brolac, Valspar, Wallcharm, etc.

Borough Press Swindon Limited

Eastcott Hill Swindon telephone 4022

Printers to successful industry

Potted History of Bristol City

Formed in 1894 as Bristol South End, the Club became professional and was renamed Bristol City in 1897, joining the Football League in 1901. Won promotion to Division 1 five seasons later, securing 66 points from 38 games. The following season the City were runners-up to Newcastle United for the League Championship, a feat they never repeated. After five seasons the Club were relegated and have never since played in Division 1. They hold the unenviable distinction of the longest consecutive period of League football without regaining Division 1 status.

In 1909, Bristol City reached the Cup Final, and were beaten by Manchester United by one goal to nil at Crystal Palace; at Stamford Bridge in 1919 they were the losing semi-finalists to Huddersfield Town by 2 goals to 1.

The following shows the see-saw between Division 2 and Division 3.

1920/21	3rd in Division 2.
1921/22	Relegated to Division 3 (South)
1922/23	Champions Division 3 (South)
1923/24	Relegated.
1926/27	Champions Division 3 (South)
1932/33	Relegated from Division 2.
1954/55	Promoted to Division 2 with equal record number of points (70) from 46 games.
1959/60	Relegated to Division 3.
1964/65	Promoted to Division 2.

In the first season back in Division 2, promotion was missed by a narrow margin, but this has been followed by four rather lean years.

Record attendance: v Preston North End (F.A. Cup) 16th February, 1935 - 46,335.

Record receipts: v Wolverhampton (League) 28th December, 1965 - £7,302; v Bristol Rovers (F.A. Cup) 27th January, 1968 - £9,953.

The Club's longest-serving player was John Atyeo who made 645 League and F.A. Cup appearances between the years 1951 and 1966, during which time he scored 350 goals. John was capped six times by England, scoring in every game.

Team managers since the war:
Bob Denison, Pat Beasley, Peter Doherty, Fred Ford, Alan Dicks.

Most capped player: W. Wedlock, twenty-six times for England.

Soccer Who's Who Football Fans' Guide

Answers all the questions football fans want to know. 92 club directory gives advance booking details, how to get there instructions, where to park details, ground facilities and entertainment, and potted history of every club. Obtainable from all newsagents, bookshops and club shops or 8/6 post free from Press Office, Football League, St. Annes, Lancs.

Fixture list 1970/71

DIVISION II

August

15	Hull City	(H) 1—1
19	League Cup (1)
22	Sheffield United	(A) 1—2
29	Sunderland	(H) 2—0

September

1	Watford	(H) 1—1
5	Blackburn Rovers	(A) 0—1
8	League Cup (2) Watford	(H) 4—2
12	Portsmouth	(H) 2—1
19	Carlisle United	(A) 1—2
26	Luton Town	(H) 0—0
29	Millwall	(H) 3—0

October

3	Charlton Athletic	(A) 1—2
6	League Cup (3) Liverpool	(H) 2—0
10	Queen's Park Rangers	(H) 1—0
16	Hull City	(A) 0—2
21	Norwich City	(A) 0—1
24	Middlesbrough	(H) 3—0
28	League Cup (4) Fulham	(A) 0—1
31	Birmingham City	(A) 1—2

November

7	Bristol City	(H)
14	Leicester City	(A)
18	League Cup (5)
21	Oxford United (1)	(A)
28	Sheffield Wednesday	(H)

December

5	Bolton Wanderers	(A)
9	League Cup Semi-Final
12	Orient (2)	(H)
16	League Cup Semi-Final
19	Sheffield United	(H)
26	Cardiff City	(A)

1971

January

2	F.A. Cup (3)
9	Millwall	(A)
16	Norwich City	(H)
23	F.A. Cup (4)
30	Sheffield Wednesday	(A)

February

6	Bolton Wanderers	(H)
13	Orient (5)	(A)
20	Oxford United	(H)
27	Birmingham City	(H)
	(League Cup Final)

March

6	Middlesbrough (6)	(A)
13	Leicester City	(H)
20	Bristol City	(A)
27	Blackburn Rovers (S.F.)	(H)

April

3	Sunderland	(A)
9
10	Cardiff City	(H)
12	Portsmouth	(A)
13	Charlton Athletic	(H)
17	Queen's Park Rangers	(A)
24	Carlisle United	(H)
28	Watford	(A)

May

1	Luton Town	(A)
8	F.A. Cup Final

FOOTBALL COMBINATION

August

15	Crystal Palace	(A) 2—3
19	Norwich City	(A) 2—1
22	Bournemouth & B.A.	(H) 3—0
25	Chelsea	(H) 3—0
29	Ipswich Town	(A) 1—1

September

5	Oxford United	(H) 2—5
12	Queen's Park Rangers	(A) 1—3
15	Cardiff City	(H) 2—2
19	Bristol Rovers	(H) 2—2
26	West Ham United	(A) 1—3

October

3	Crystal Palace	(H) 2—1
10	Arsenal	(A) 0—7
14	Fulham	(A) 1—2
17	Queen's Park Rangers	(H) 1—1
20	Swansea City	(H) 0—1
31	Birmingham City	(H) 2—2

November

7	Bristol City	(A)
14	Leicester City	(H)
21	Fulham	(H)
24	Gillingham	(A)
28	Tottenham Hotspur	(A)

December

5	Plymouth Argyle	(H)
19	Bournemouth & B.A.	(A)
26	Reading	(H)

1971

January

9	Norwich City	(H)
16	Chelsea	(A)
23	Southampton	(A)
30	Tottenham Hotspur	(H)

February

6	Plymouth Argyle	(A)
13	Southampton	(H)
24	Cardiff City	(A)
27	Birmingham City	(A)

March

6	Gillingham	(H)
13	Leicester City	(A)
20	Bristol City	(H)
31	Oxford United	(A)

April

3	Ipswich Town	(H)
7	Reading	(A)
17	Arsenal	(H)
20	Swansea City	(A)
24	Bristol Rovers	(A)

May

1	West Ham United	(H)
---	-----------------	-----------

Copyright of The Football League Ltd. and not to be reproduced without permission.

League table division 2

(up to and including Wednesday, 4th Nov., 1970)

Football Combination

(up to and including Wednesday, 4th Nov.)

	P	W	D	L	Goals		Pts.
					F	A	
Leicester City ...	15	9	4	2	25	11	22
Hull City ...	15	9	3	3	20	14	21
Luton Town ...	15	8	4	3	27	10	20
Cardiff City ...	15	7	6	2	24	14	20
Oxford United ...	15	8	4	3	22	16	20
Sheffield United ...	15	6	7	2	27	20	19
Norwich City ...	15	6	5	4	17	14	17
Carlisle United ...	15	5	7	3	18	16	17
Sunderland ...	15	6	3	6	21	17	15
Middlesbrough ...	15	6	3	6	23	23	15
Q.P.R. ...	15	6	2	7	26	25	14
Millwall ...	15	5	4	6	18	18	14
Watford ...	15	4	6	5	18	24	14
Sheffield Wed. ...	16	5	4	7	20	27	14
Portsmouth ...	15	5	3	7	22	20	13
Swindon Town ...	15	5	3	7	17	15	13
Bolton W. ...	16	5	3	8	19	25	13
Birmingham City ...	15	4	4	7	15	22	12
Orient ...	15	3	6	6	11	22	12
Blackburn R. ...	15	2	6	7	12	23	10
Bristol City ...	15	3	4	8	17	30	10
Charlton A. ...	15	1	5	9	10	26	7
Tottenham Hotspur ...	15	10	3	2	32	6	23
Swansea City ...	16	9	5	2	30	12	23
Southampton ...	16	10	2	4	19	13	22
Birmingham City ...	15	7	7	1	24	16	21
Bristol City ...	14	7	6	1	28	14	20
Ipswich Town ...	16	7	5	4	26	20	19
West Ham U. ...	15	8	2	5	29	15	18
Q.P.R. ...	14	7	4	3	26	19	18
Arsenal ...	14	6	5	3	32	15	17
Norwich City ...	16	7	3	6	17	21	17
Leicester City ...	14	6	3	5	17	12	15
Bournemouth ...	16	6	3	7	18	23	15
Crystal Palace ...	15	5	4	6	21	18	14
Cardiff City ...	16	4	5	7	16	13	13
Swindon Town ...	16	4	5	7	25	34	13
Fulham ...	16	3	7	6	16	23	13
Chelsea ...	16	5	3	8	15	26	13
Bristol Rovers ...	15	3	5	7	22	31	11
Oxford United ...	16	3	2	11	19	35	8
Plymouth Argyle ...	15	3	2	10	16	41	8
Reading ...	14	3	1	10	24	39	7
Gillingham ...	14	2	2	10	8	34	6

Key of the board

First Section

A-Blackpool v Arsenal
 B-Crystal Palace v Leeds
 C-Derby County v Liverpool
 D-Everton v Nottingham Forest
 E-Huddersfield v Chelsea
 F-Ipswich Town v West Ham United
 G-Manchester United v Stoke City
 H-Southampton v Newcastle United
 I-Tottenham Hotspur v Burnley
 J-Wolverhampton W. v West Brom A.
 K-Blackburn Rovers v Sheffield United
 L-Bolton Wanderers v Norwich City
 M-Carlisle United v Oxford United
 N-Charlton Athletic v Portsmouth
 O-Hull City v Luton Town
 P-Orient v Middlesbrough
 Q-Queen's Park Rangers v Cardiff City
 R-Sheffield Wednesday v Millwall
 S-Sunderland v Birmingham City
 T-Watford v Leicester City

Second Section

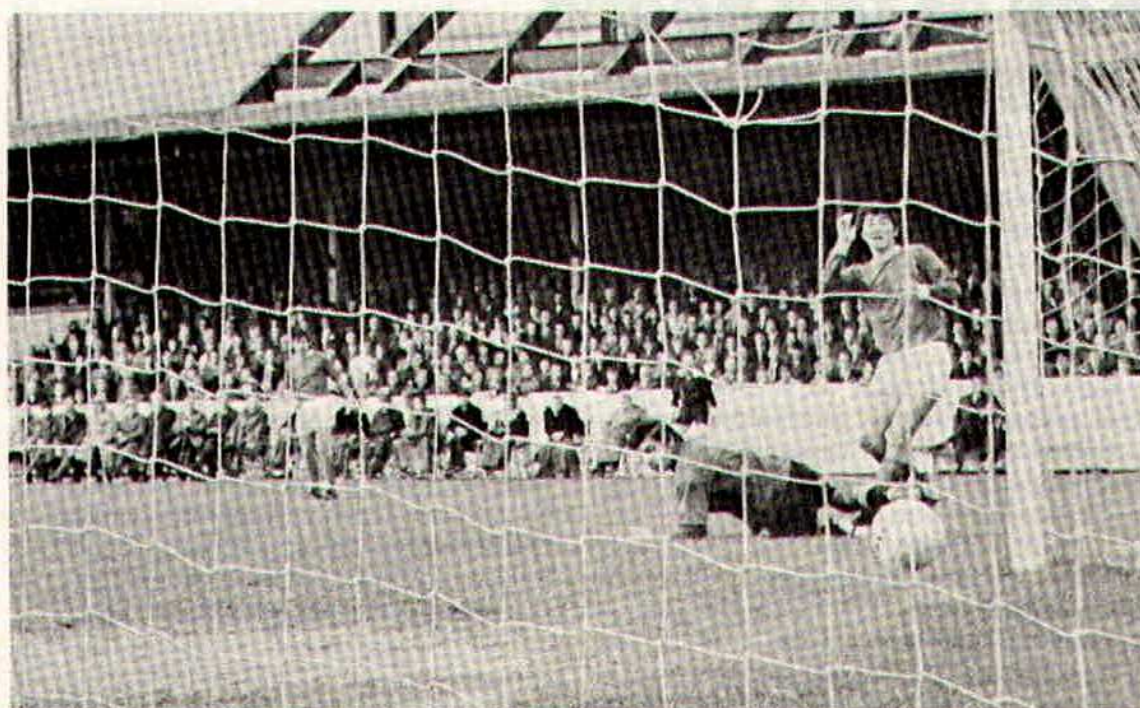
A-Aston Villa v Torquay United
 B-Bradford City v Rotherham United
 C-Brighton v Chesterfield
 D-Bristol Rovers v Reading
 E-Fulham v Bury
 F-Mansfield Town v Halifax Town
 G-Plymouth Argyle v Gillingham
 H-Rochdale v Wrexham
 I-Swansea City v Walsall
 J-Aldershot v Workington
 K-Crewe v Southport
 L-Darlington v Bournemouth
 M-Exeter City v Colchester United
 N-Grimsby Town v Cambridge United
 O-Hartlepool United v Peterborough U.
 P-Lincoln City v Scunthorpe United
 Q-Notts County v Northampton Town

Twin strikers in action



Peter Noble just failed to score after beating Whigham, the Middlesbrough 'keeper, to a high ball.

Whigham looks dejected as Horsfield scores Swindon's third goal in the twelfth minute against Middlesbrough.



the man in the middle

Roger Kirkpatrick

Started refereeing in 1949 in schoolboy football, progressing to the Leicestershire Senior League and then to the Southern League before being appointed to the Football League Line in 1964. He became a Football League Referee in 1966.

One of the more important matches he has officiated in was an International match between Finland and Denmark in 1970.

Mr. Kirkpatrick, a sales director, is married with two sons aged 17 and 15 years. He is very keen on physical fitness and plays a lot of squash, golf and five-a-side football. Mr. Kirkpatrick is of the opinion that all referees should place at least one Saturday of their season to Schoolboy football.

**Your team
for Planned Savings**



SAVINGS ACCOUNTS

**GOVERNMENT
STOCKS**

**SAVE AS YOU EARN
SCHEME**

**T.S.B.
UNIT TRUST**

**CHEQUE
ACCOUNTS**

**LIFE ASSURANCE
LINKED SAVINGS**

**CASH
DISPENSER**

**CHEQUE
CARDS**

SERVICE

**FOREIGN
CURRENCY**

**STANDING
ORDERS**

Ask for details at your local T.S.B. Office

TRUSTEE SAVINGS BANK

93 Commercial Road, Swindon

Telephone 23949

29 FARINGDON ROAD SWINDON

Telephone 27378

Main suppliers to Swindon Town Football Club

Stockists of

**All leading makes of Football Boots and Clothing
Table Tennis, Badminton, Rugby and Hockey equipment
IN FACT THE COMPLETE SPORTS OUTFITTER**

POPULAR EXCURSION TO

Fare

adult child

Saturday, 14th Nov.	LEICESTER CITY	depart 10.00 a.m.	18/-	12/-
Saturday, 21st Nov.	OXFORD UNITED	depart 1.00 p.m.	9/-	6/-

SERVICE DIRECT TO THE GROUND
ALL SEATS NUMBERED AND RESERVED

Book now at

102 Commercial Rd., Swindon **46 Cricklade St., Cirencester**
Telephone 27113 Telephone 3479

or with any of Rimes Booking Agents

Dobell Shearman & Co. Ltd.
HIGH STREET, OLD TOWN, SWINDON

Telephone 4961

FANCY and COMMERCIAL STATIONERS
TYPEWRITERS and OFFICE EQUIPMENT

**Greetings Cards for all Occasions
from Leading Art Publishers**



W. J. CASTLE

Office and Bakery

**4 and 5 MARKET STREET
SWINDON**

Telephone 22017

Specialists—

BIRTHDAY CAKES - WEDDING CAKES

DAIRY CREAM - PASTRIES

BUNS - ROLLS - SPONGES



Supporters club notes

Anglo-Italian Inter-League Clubs Competition, 1970/71 season. Proposed Supporters' Club visit to Italy for two away games.

Supporters will recall that it is proposed, if possible, to organise a short holiday visit to Italy at the end of this season, to enable supporters to support the Town in their defence of the Cup won in the above Competition last May. To this end, a suitable application for provisional bookings was printed in earlier programmes this season.

At this present time, the number of provisional bookings stand at almost 100, which is very gratifying. Amongst the names sent in – from Swindon, from Melksham to Wantage and Gloucester to Salisbury – are a large number of those who went to one or more of the single flights organised to Rome, Turin and Naples last season.

A number of enquiries were made with the applications. At this stage, rather than use up the stamped addressed envelopes supplied by applicants, I have summarised the answers for them and for anyone else interested.

- 1 Only bona fide supporters of Swindon Town can be carried under present air charter Rules, which will be strictly complied with. These comprise:
(a) Supporters' Club members with not less than 6 months membership. Members enrolling after 1st December next **could be ineligible**.
(b) Season ticket holders, provided their season tickets were valid for more than six months **before** departure.
(c) Members of the immediate families of the above, i.e. wives and children living at home.
- 2 The date of the trip **cannot** be decided until the dates of the matches in Italy have been fixed, or until we know which two teams Swindon Town have been drawn to play. This will decide where the party can stay in Italy. The object is to select a suitable resort, as far as possible, equidistant from the two matches.

Whilst these dates are as yet unknown, it would seem possible that the week after the F.A. Cup Final (to be played on the 8th May) could be a rough guide at this time.

- 3 **Cost.** Again, this is problematical and depends on flight and hotel costs. As far as hotels are concerned, enquiries made personally in Italy last month would indicate that full board would be about 35/- to 45/- per person per day, depending on the class of hotel and type of room required (i.e., with or without private bath or shower, W.C. etc.).

Travel to and from the matches and the tickets to the matches would be additional, but together should be about £2 10s. 0d. each match, or less if the games are not too far apart.

- 4 If time should be against organising the above extended trip, there is no doubt that day trips on the lines of last season could be substituted.
- 5 Please watch these Notes for future announcements.

I would like to correct an error in our last Programme Notes. The St. John's Ambulance Brigade second collection is at the Leicester City match on 13th March and not the Oxford United game.

Supporters Social Club Tote winning numbers 25th October, 1970 20 3
One winner of £36 – Mrs. R. Giles, Swindon.

Three winning numbers Sunday,
1st November 1 7
4253 4266 3593 Share £36.

Members wishing to sell tote tickets should contact Mr. M. Lewis, Mr. A. Milne or Mr. A. Ranger in the Social Club.

HARRY LUNN

(Ex NOTTS COUNTY, PORTSMOUTH and SWINDON TOWN F.C.)

Fish Bar and Restaurant
27-28 COMMERCIAL ROAD SWINDON

RESTAURANT open 9 a.m. to 10 p.m. for

Snacks - Lunches - High Teas - Evening Meal

FISH BAR open Mid-day and Evenings until 11 p.m.

HULFORD MOTORS LIMITED

SELF DRIVE HIRE

Fleet of 1970/69 Fords Escorts De-Luxe
Cortinas De-Luxe Cortinas 1600 Estate
(Bench Seat Column Change) — Zephyr V4s

SHRIVENHAM ROAD

(200 yards from Football Ground)

Telephone 4934

Large Car Park Available

COWLEY BROS. (Wroughton) LTD.

**BUILDERS OF MODERN ATTRACTIVE
HOUSES and BUNGALOWS**

SWINDON

Developments at
WROUGHTON

BADBURY

Office

**28 NEWPORT STREET
SWINDON**

Telephone Swindon 6870

Reserved for British Rail



Inter-City

Golden Goal Competition

Tickets bearing the time in minutes and seconds will be on sale before the game – price **one shilling**
The ticket with the exact time when the FIRST GOAL is scored will win

£60

The ticket bearing the time when the LAST GOAL is scored will win

£10

The official announcer will be the timekeeper and he will announce the official time of both goals.
Should only one goal be scored the winning ticket holder will receive £70. In the event of no goals tickets bearing no score will win £10

A further prize of **£10** will also be given for the ticket bearing the number corresponding to the official attendance at the match
Be sure to get your ticket –
Watch for the
GOLDEN GOAL GIRLS!

In the event that tickets bearing the exact time of goals have not been claimed the prizes will be paid to those bearing the nearest time.

GOLDEN GOAL WINNERS

Middlesbrough (24th October)

First Goal (£60) actual time 1m 4s, paid on 1m 3s and 1m 5s: Mr. L. D. Lawrence, 14 Sandringham Road, Swindon (£30) and Mr. J. Diaz, 2 Denchworth Road, Wantage (£30).

Last Goal (£10) actual time 12m 1s, paid on 12m 4s: Mr. E. Wiltshire, Hill View, Honeystreet, Nr. Pewsey.

Attendance (£10) actual 15,219 – 16,001 qualifies: paid on 16,003.
Mr. O. Mills, Fawler, Charlbury, Oxford.

Forthcoming matches

SATURDAY, 14th NOVEMBER, 1970

Football Combination – Kick-off 3 p.m.

Swindon Town v Leicester City

SATURDAY, 21st NOVEMBER, 1970

Football Combination – Kick-off 3 p.m.

Swindon Town v Fulham

SATURDAY, 28th NOVEMBER, 1970

Division II – Kick-off 3 p.m.

Swindon Town v Sheffield Wednesday

Personality Spot ...

Peter Noble



A handwritten signature of Peter Noble in dark ink. The signature is stylized, with a large 'P' and 'N'.

A player who always gives 100% effort, he has certainly proved his worth since his transfer from Newcastle. Has scored many important goals in matches for the Town. Although slightly built he can outjump most six foot defenders.

His wife's name is Jane and his 18-month-old daughter Tracy Jane completes the family. Peter is interested in all sports.

Regular member of the promotion winning side of season 1968/69. He was a member of the League Cup winning team of 1969 and also played in the team which won two Anglo-Italian Cup Competitions.

Suppliers to the Swindon Team
MAY WE SUPPLY YOU?



EARLE

of Chippenham Limited

MAIN

FORD

DEALERS

COCKLEBURY ROAD CHIPPENHAM

Telephone 3255

H. HIBBERD LIMITED

FOR YOUR EARTH-MOVING EQUIPMENT

Plant Hire Contractors



40 NEWPORT STREET SWINDON

Telephone Swindon 6125

follow the robins . . .

to Leicester City Saturday, 14th November

Leave Swindon by the Shrivenham Road A361 and continue via Highworth, Burford and Chipping Norton to **Banbury.**

44 miles

At the end of Bloxham Road, Banbury, A361 turn left onto A41, continue through South Bar Street past Banbury Cross into North Bar Street and into Southam Road A423, continue via Mollington to Southam. At Southam keep right and at junction take B4100 and turn right for the A426 road to **Dunchurch.**

69 miles

One mile on turn left for Rugby continuing on the A426. Enter Rugby by Dunchurch Road, turn left into Warwick Street then right into Corporation Street keep left for Newbold Road, after crossing Mill Bridge turn right. Continue on A426 via Gibbet Hill, Lutterworth and Blaby into Aylestone Road, turn left into Filbert Street for City football ground **Leicester.**

90 miles

Admission prices at Leicester City

Ground 6/- (Boys 3/-). Enclosure 7/- (Boys 4/-). Double Decker Stand 10/-. Wing Stand 12/-. Centre Stand 16/-. Reserved tickets are available from the Club offices four weeks before a match on receipt of correct remittance and stamped addressed envelope.

Route kindly supplied by R.A.C.

to Oxford United Saturday, 21st November

Take the A361 road from Swindon to **Shrivenham.**

6½ miles

Leave on the A420 for **Faringdon.**

12½ miles

Continue via Fyfield and Littleworth on the A420 to **Oxford.**

30½ miles

Admission prices at Oxford United

Beech Road Stand 11/-. Dressing Room Stand 9/-. Ground 6/- (under 15s and O.A.P.'s 3/-).

Tickets for the Beech Road and Dressing Room Stands may be obtained approximately two weeks before the scheduled date of a match, by personal or postal application, enclosing the correct remittance and stamped addressed envelope.



Midland Youth League

(up to and including Saturday, 31st October)

	P	W	D	L	Goals		A	Pts.
					F	A		
Wolverhampton W.	6	4	2	0	11	6	10	
Birmingham City	6	4	1	1	15	4	9	
West Brom. A. ...	6	4	1	1	13	6	9	
Leicester City ...	7	3	1	3	14	9	7	
Coventry City ...	6	3	1	2	12	11	7	
Nottingham Forest	5	2	2	1	11	7	6	
Swindon Town ...	7	2	2	3	8	10	6	
Peterborough U.	6	2	1	3	7	10	5	
Notts County ...	7	2	1	4	5	13	5	
Aston Villa ...	5	1	2	2	7	9	4	
Northampton Town	6	1	2	3	8	14	4	
Oxford United ...	5	0	0	5	3	15	0	

Match results week ending 29th October, 1970

Birmingham 0, Wolverhampton 0
Leicester 3, Nottingham Forest 3
Northampton 2, Aston Villa 2
Notts County 2, Swindon 1
Oxford 0, Coventry 2
Peterborough 0, West Bromwich Albion 1

AKERS GARAGE LIMITED

THE STREET MOREDON SWINDON WILTSHIRE

Telephone Swindon 3457/8

main dealer for
VAUXHALL/BEDFORD
and
Parts and Accessories
Sales and Service

Showrooms open
MONDAY to FRIDAY — 8 a.m. to 8 p.m.
SATURDAY — Closed 7 p.m.
SUNDAYS — 10 a.m. to 2 p.m. for Petrol and Viewing

For a home win fill in this coupon NOW!

I am interested in a home on the Nythe Estate. ☐
Greenmeadow Estate. ☐ Eldene Estate. ☐

NAME _____

ADDRESS _____

We are currently building the three Swindon developments indicated on the coupon, together with other housing projects in the counties of Somerset and Dorset.

BRADLEY ESTATES

74 VICTORIA ROAD SWINDON

Tel: 5865



spectator seating in high density polyethylene

- * Supplied to over 40 Football League clubs
- * Any colour. No maintenance
- * Industrial seats for the food, electronics and pharmaceutical industries
- * Largest supplier of spectator and industrial seating in Europe
- * Heavy, medium and light steel fabrication
- * Custom made production line equipment
- * Ancillary work for industry and the building trade

FAST EFFICIENT SERVICE BY



MARTYN LYNshaw LTD

BOUNDARY WORKS - STRATTON ROAD - SWINDON - WILTS

Telephone: 24231